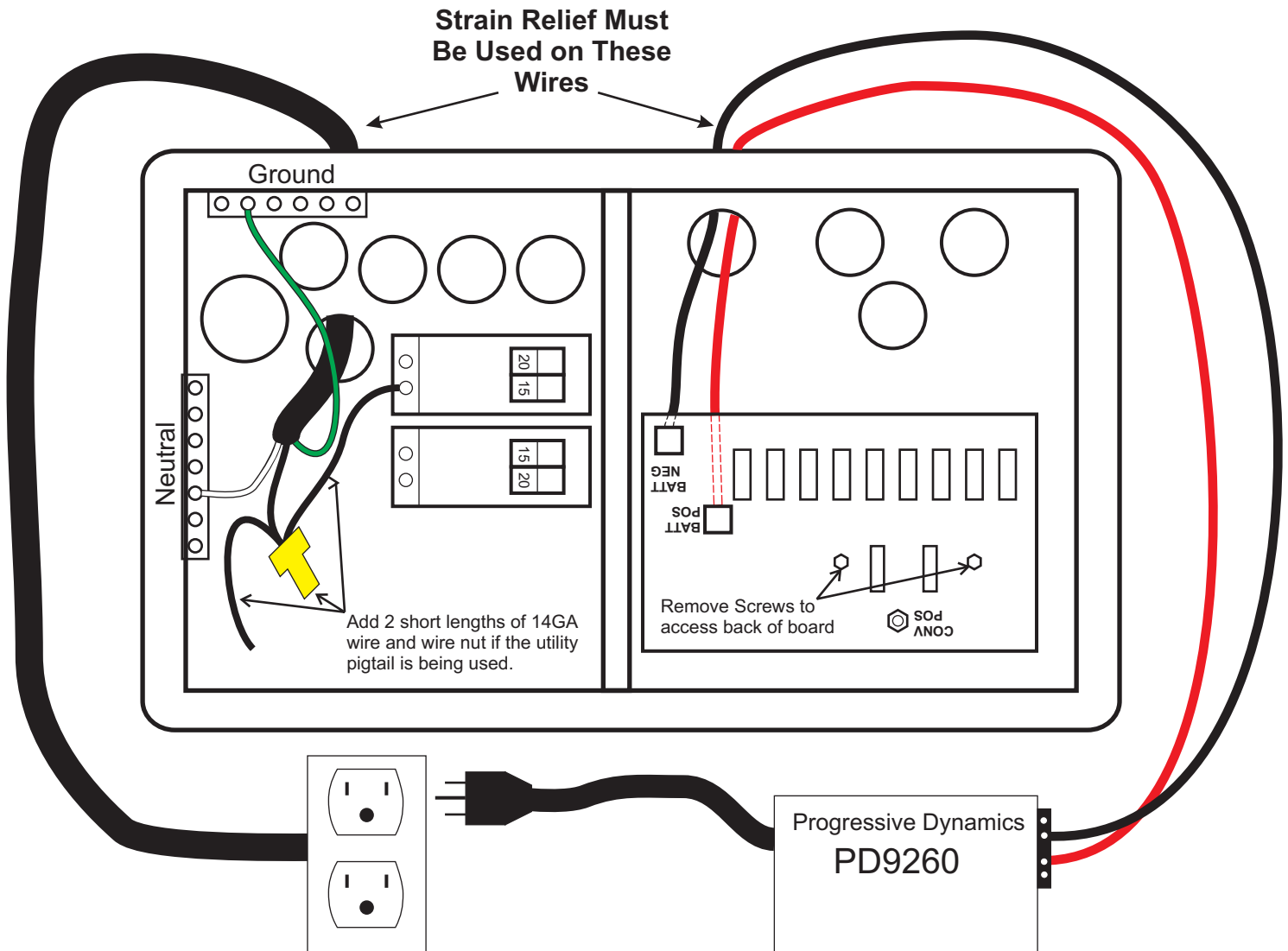


Progressive Dynamics Deck Mount Converter to Schumacher Panel Retrofit



! WARNING: DISCONNECT ALL AC POWER FROM THE RV PANEL BEFORE ATTEMPTING ANY MODIFICATION! !

AC CONNECTIONS

Disconnect all Schmacher 110V connections (disconnected wires can be pushed back into the converter section)
Run a new Romex wire (14ga, 3 wire) connected to the same locations as the original converter section.
Other end of Romex wire will need a 15A 120V outlet mounted near the deck mount converter
If the utility pigtail was used on the original connections two short lengths of 14GA wire and a wire nut may be used to provide the utility pigtail. DO NOT install 2 wires into the breaker.

DC CONNECTIONS

Remove 2 screws holding the DC fuse board in place.
Disconnect wire from back side of the BATT NEG terminal.
This wire can be shoved back into the existing converter section.
Connect negative wire from PDI Converter to back side of BATT NEG terminal.

Disconnect wire from back side of CONV POS screw. (this connection will no longer be used.)
This wire can be shoved back into the existing converter section.
Connect positive wire from PDI Converter to back side of BATT POS terminal.
The reverse battery fuses on the fuse board can be removed, the reverse battery protection fuses are now located at the power converter.

Consult a licensed electrician or an RV technician for installation assistance.

701292A