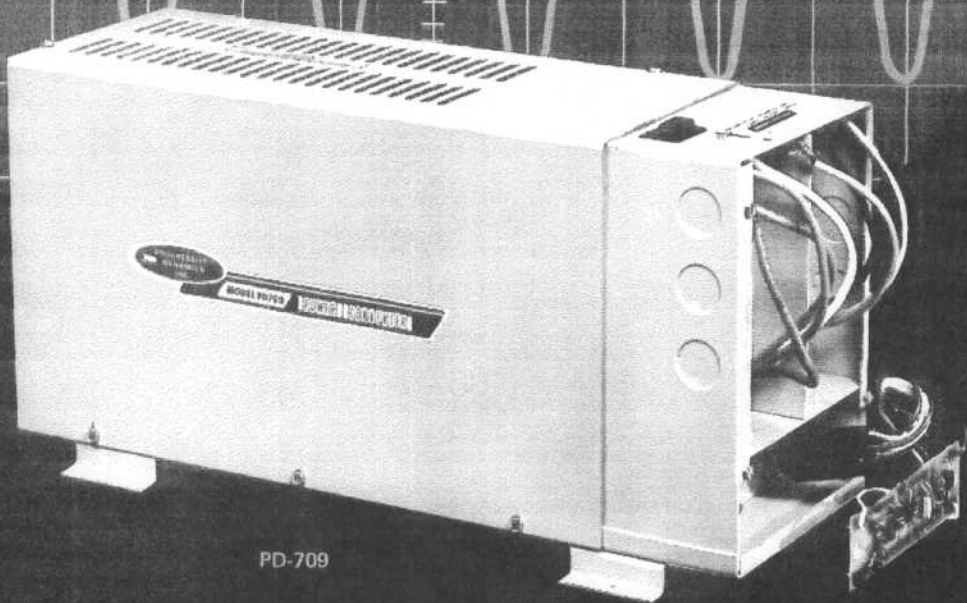


from progressive dynamics

dependable power!



PD-709

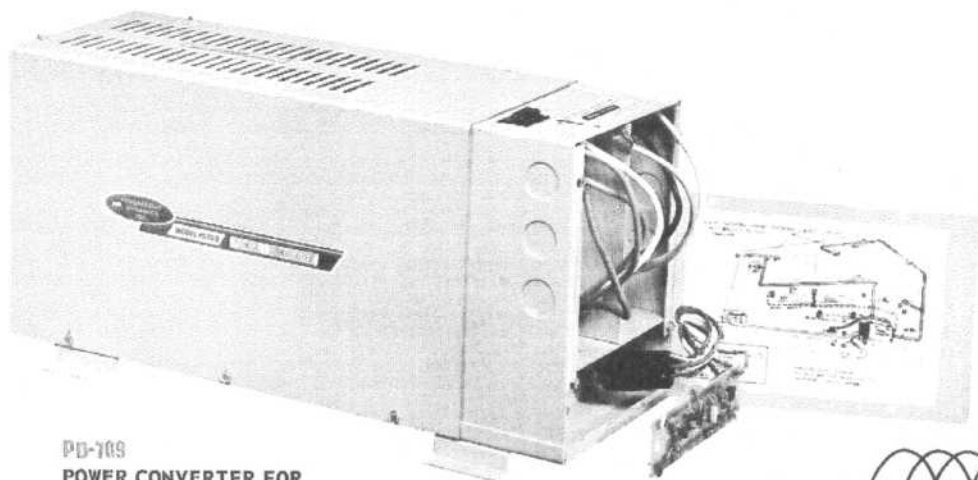
YOU CAN NOW . . . Operate from a 12 volt battery or from a standard 115 volt electrical outlet. Your Electronic Power Converter automatically does all the rest. For Marine or Recreational Vehicle applications.

Join the better traveling crowd with . . .



PROGRESSIVE DYNAMICS, INC.

MARSHALL, MICHIGAN

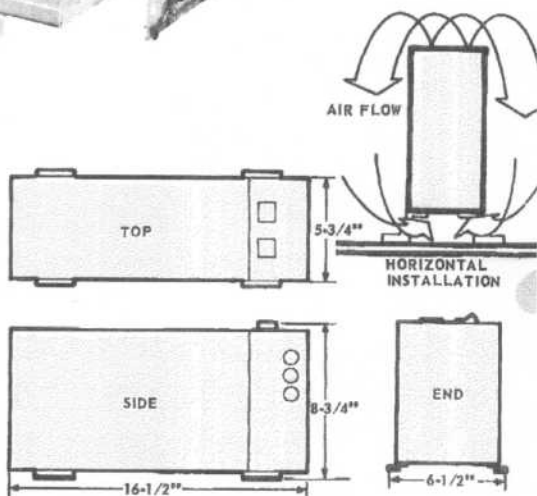


PD-709
POWER CONVERTER FOR
HORIZONTAL INSTALLATION
 (PATENT PENDING)

NOTE:

The 709 Power Converter differs from the 707 and 708 converters as follows:

- Recharges 60 amp hour battery in 2½ hours. (No. 707 or No. 708 takes 8 hours.)
- No switch needed to go from transformer to 12 volt battery because of the automatic SCR. (Battery is in circuit at all times.)
- The 709 has a removable Electronic Circuit Board.



WITH THE PROGRESSIVE DYNAMICS FULLY AUTOMATIC PD-709 ELECTRONIC POWER CONVERTER, HERE ARE A FEW MORE BENEFITS YOU GET:

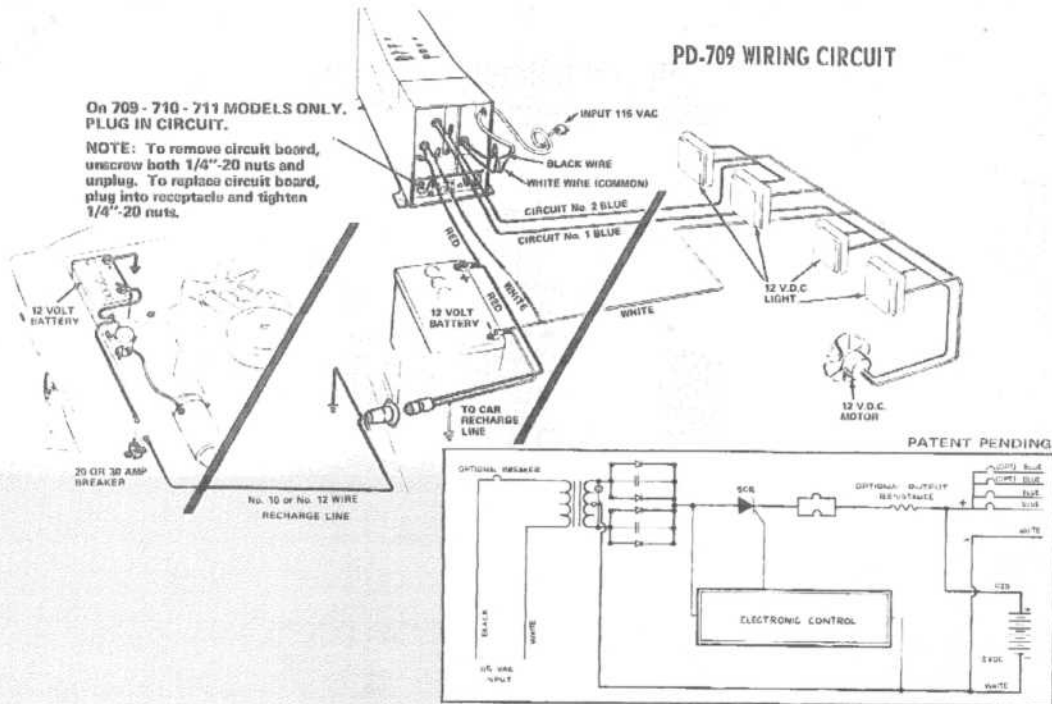
- PROTECTION AGAINST ACCIDENTAL REVERSAL OF BATTERY.
- CIRCUIT PROTECTION AGAINST SHORTS. FOUR AUTOMATIC RESETTING THERMO-BREAKERS.
- ELECTRONIC CIRCUIT WILL LIMIT CHARGE TO BATTERY. NO EXPLOSION OR DAMAGING OVERCHARGING OF BATTERY.
- PROTECTION AGAINST SULFATION
- NO CIRCUIT ENTRANCE BOX NEEDED.
- NO FUSES NEEDED.
- INSTALL EXTRA 115 VOLT APPLIANCE OUTLETS *WITHOUT* AN EXTRA FUSE BOX (THE EXCLUSIVE PROGRESSIVE DYNAMICS *PUSH-BUTTON* CIRCUIT BREAKER. ALLOWS THIS).

FOR RECREATION VEHICLES OR HOUSEhold USES

PD-709 WIRING CIRCUIT

On 709 - 710 - 711 MODELS ONLY.
PLUG IN CIRCUIT.

NOTE: To remove circuit board, unscrew both 1/4"-20 nuts and unplug. To replace circuit board, plug into receptacle and tighten 1/4"-20 nuts.



SPECIFICATIONS

- Input current 6 amps. 115 V.A.C. to 60 cycles (acceptable input of 85 to 130 volts A.C.).
- Continuous D.C. current output 30 amps, 14.2 V.D.C. at 70° F.
- Two 15 amp. automatic resetting thermo-breakers, one for each 12 volt D.C. output wiring.
- Temperature operating range - 15° to 120° F.
- Battery charger, 30 amp. hour rate.
- Weight 33 pounds.

D.C. current consumption of various components used within the travel trailer.

Purpose:

To provide better knowledge of the various circuits necessary and loads possible per circuit. A complete D.C. Current consumption test was run with the idea of the information being used for the design of the wiring harness of the travel trailer.



DESCRIPTION	VOLTAGE	AMPS PER HR.	NUMBER OF BULBS PER LIGHT
Bath Light #4170	12.4	4.4	3
Dinette Light #4260	12.4	5.5	4
Under Cabinet Light #4380	12.4	3.0	2
Vent Fan Model C-1010 (Range hood exhaust)	12.4	motor 3.3 light 1.5	1
Double Bullet Light - Max.	12.4	4.8 Total	
Single Bullet Light - Max.	12.4	4.0	
Champion 25 Watt 12-volt light	12.4	1.5	1
Furnace Fan (Duo-Therm) Models 61901 & 61701	12.4	.8	
Humphrey Water Pump Model P-1-000	12.4	9.1 no load 10.0 loaded	
Trunk Light	12.4	1.5	1
Power Alum-Dome Fan	12.4	2.8	
Vent Fan	12.4	4.8	
Porch Light	12.4	1.5	1
Air Compressor	12.4	6.0	